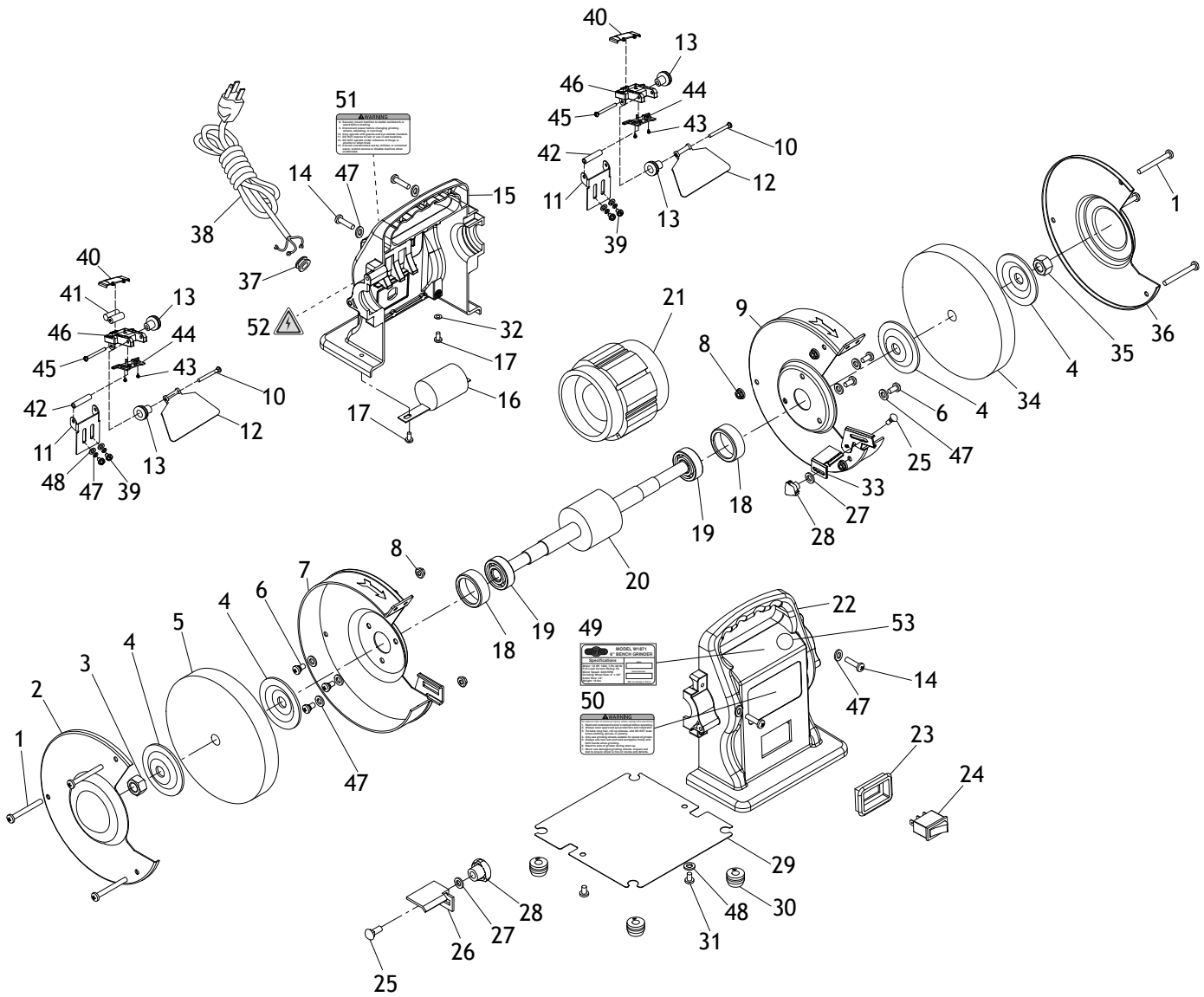


# PARTS



# Parts List

REF PART #	DESCRIPTION
1	X1871001 PHLP HD SCR M5-.8 X 50
2	X1871002 WHEEL GUARD (OUTER, LEFT)
3	X1871003 HEX NUT M12-1.75 LH
4	X1871004 GRINDING WHEEL FLANGE 1/2
5	X1871005 GRINDING WHEEL 6" X 3/4" X 1/2" 36G
6	X1871006 PHLP HD SCR M5-.8 X 10
7	X1871007 WHEEL GUARD (INNER, LEFT)
8	X1871008 FLANGE NUT M5-.8
9	X1871009 WHEEL GUARD (INNER, RIGHT)
10	X1871010 CARRIAGE BOLT M5-.8 X 55
11	X1871011 SPARK DEFLECTOR
12	X1871012 SAFETY SHIELD
13	X1871013 KNOB M5-.8, D20, ROUND
14	X1871014 PHLP HD SCR M5-.8 X 20
15	X1871015 GRINDER CASING (REAR)
16	X1871016 R CAPACITOR 10M 300V 1-3/8 X 2
17	X1871017 PHLP HD SCR M4-.7 X 8
18	X1871018 BEARING SLEEVE
19	X1871019 BALL BEARING 6202ZZ
20	X1871020 ROTOR
21	X1871021 STATOR
22	X1871022 GRINDER CASING (FRONT)
23	X1871023 SWITCH PLATE
24	X1871024 ON/OFF SWITCH K5 250V
25	X1871025 CARRIAGE BOLT M6-1 X 14
26	X1871026 TOOL REST (LEFT)

REF PART #	DESCRIPTION
27	X1871027 FLAT WASHER 6MM
28	X1871028 KNOB M6-1, D26, 6-LOBE
29	X1871029 GRINDER BASE PLATE
30	X1871030 FOOT (RUBBER)
31	X1871031 PHLP HD SCR M5-.8 X 8
32	X1871032 EXT TOOTH WASHER 4MM
33	X1871033 TOOL REST (RIGHT)
34	X1871034 GRINDING WHEEL 6" X 3/8" X 1/2" 60G
35	X1871035 HEX NUT M12-1.75
36	X1871036 WHEEL GUARD (OUTER, RIGHT)
37	X1871037 STRAIN RELIEF TYPE-1 1/2
38	X1871038 POWER CORD 18G 3W 78" 5-15P
39	X1871039 PHLP HD SCR M5-.8 X 10
40	X1871040 BATTERY COVER
42	X1871042 HOLLOW SHAFT 5 X 8 X 42MM
43	X1871043 TAP SCREW M3 X 8
44	X1871044 LED LIGHT COVER
45	X1871045 CARRIAGE BOLT M5-.8 X 60
46	X1871046 LED LIGHT HOUSING
47	X1871047 LOCK WASHER 5MM
48	X1871048 FLAT WASHER 5MM
49	X1871049 MACHINE SPECIFICATIONS LABEL
50	X1871050 MACHINE WARNING LABEL (FRONT)
51	X1871051 MACHINE WARNING LABEL (REAR)
52	X1871052 ELECTRICITY LABEL
53	X1871053 TOUCH-UP PAINT, SHOP FOX WHITE