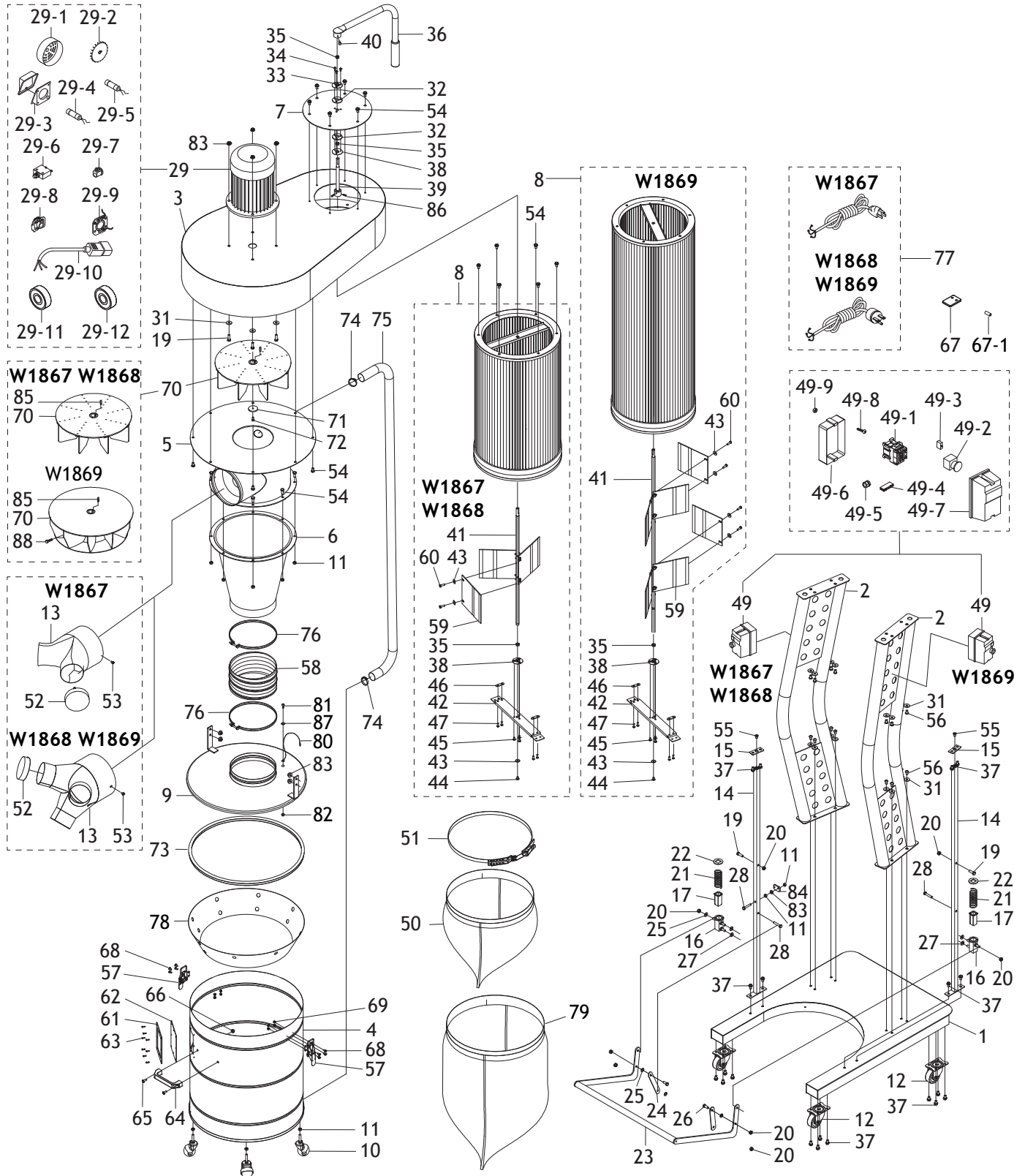


PARTS

W1867/W1868/W1869 Parts



W1867 Parts List

REF	PART #	DESCRIPTION
1	X1867001	BASE
2	X1867002	SUPPORT LEG
3	X1867003	IMPELLER HOUSING
4	X1867004	COLLECTION DRUM, 20 GALLON
5	X1867005	INTAKE BARREL
6	X1867006	CYCLONE FUNNEL
7	X1867007	FILTER COVER PLATE
8	X1867008	CANISTER FILTER ASSY 14-1/2" X 24"
9	X1867009	COLLECTION DRUM LID
10	X1867010	CASTER 2", SWIVEL
11	X1867011	HEX NUT 5/16-18
12	X1867012	CASTER 2-1/2", LOCKING SWIVEL
13	X1867013	INLET ADAPTER 6" X 4" X 2
14	X1867014	LOCK HANDLE GUIDE
15	X1867015	MOUNTING PLATE
16	X1867016	SPRING BRACKET
17	X1867017	COPPER PLATE
19	X1867019	HEX BOLT 5/16-18 X 1
20	X1867020	LOCK NUT 5/16-18
21	X1867021	COMPRESSION SPRING 3 X 33 X 70
22	X1867022	SPRING RETAINER
23	X1867023	DRUM LOCK HANDLE
24	X1867024	LOCK HANDLE LINK
25	X1867025	FLAT WASHER 3/8 PLASTIC
26	X1867026	BUTTON HD CAP SCR 5/16-18 X 3/4
27	X1867027	FLAT WASHER 5/16
28	X1867028	HEX BOLT 5/16-18 X 1-3/4
29	X1867029	MOTOR 1.5HP 110V 1-PH
29-1	X1867029-1	MOTOR FAN COVER
29-2	X1867029-2	MOTOR FAN
29-3	X1867029-3	MOTOR JUNCTION BOX
29-4	X1867029-4	R CAPACITOR 50M 250V 1-1/2 X 2-3/8
29-5	X1867029-5	S CAPACITOR 300M 125V 1-3/8 X 2-5/8
29-6	X1867029-6	CIRCUIT BREAKER ZING EAR ZE-700 25A
29-7	X1867029-7	STRAIN RELIEF TYPE-2 15MM
29-8	X1867029-8	CENTRIFUGAL SWITCH
29-9	X1867029-9	CONTACT PLATE
29-10	X1867029-10	MOTOR CORD W/PLUG 14G 3W 30"
29-11	X1867029-11	BALL BEARING 6203-2RS
29-12	X1867029-12	BALL BEARING 6205-2RS
31	X1867031	FENDER WASHER 5/16
32	X1867032	RUBBER GASKET 43MM
33	X1867033	BEARING RETAINER, UPPER
34	X1867034	PHLP HD SCR M5-.8 X 8
35	X1867035	SLEEVE BEARING 12 X 14 X 6MM
36	X1867036	FILTER PADDLE HANDLE
37	X1867037	FLANGE BOLT 5/16-18 X 1/2
38	X1867038	BEARING RETAINER, LOWER
39	X1867039	PADDLE HANDLE SPINDLE
40	X1867040	HEX BOLT M6-1 X 16
41	X1867041	FILTER PADDLE SPINDLE
42	X1867042	PADDLE SPINDLE BRACKET
43	X1867043	FLAT WASHER 1/4

REF	PART #	DESCRIPTION
44	X1867044	PHLP HD SCR M6-1 X 10
45	X1867045	PHLP HD SCR M5-.8 X 8
46	X1867046	PADDLE SPINDLE BRACKET RETAINER
47	X1867047	PHLP HD SCR M5-.8 X 15
49	X1867049	MAG SWITCH NHD MS1-12D 110V
49-1	X1867049-1	CONTACTOR NHD C-12D10 110V
49-2	X1867049-2	E-STOP SWITCH NHD NPB22-H
49-3	X1867049-3	CONTACT BLOCK NHD CB-01
49-4	X1867049-4	REMOTE CONTROL RECEIVER
49-5	X1867049-5	STRAIN RELIEF TYPE-3 M20-1.5
49-6	X1867049-6	MAG SWITCH BASE
49-7	X1867049-7	MAG SWITCH COVER
49-8	X1867049-8	PHLP HD SCR 10-24 X 3/4
49-9	X1867049-9	HEX NUT 10-24
50	X1867050	FILTER BAG 20" X 23"
51	X1867051	BAG CLAMP 15"
52	X1867052	INLET ADAPTER CAP 4"
53	X1867053	PHLP HD SCR 10-24 X 3/8
54	X1867054	FLANGE BOLT 5/16-18 X 3/4
55	X1867055	FLAT HD SCR 5/16-18 X 1-1/4
56	X1867056	BUTTON HD CAP SCR 5/16-18 X 1/2
57	X1867057	COLLECTION DRUM LID LATCH
58	X1867058	FLEX HOSE 7" X 5"
59	X1867059	FILTER PADDLE
60	X1867060	HEX BOLT M6-1 X 12
61	X1867061	FOAM GASKET, 120 X 140MM
62	X1867062	DRUM WINDOW, 120 X 140MM ACRYLIC
63	X1867063	RIVET 2 X 4MM
64	X1867064	COLLECTION DRUM HANDLE
65	X1867065	PHLP HD SCR 1/4-20 X 5/8
66	X1867066	ACORN NUT 1/4-20
67	X1867067	REMOTE CONTROL
67-1	X1867067-1	REMOTE BATTERY TYPE A27 12V
68	X1867068	PHLP HD SCR M4-.7 X 8
69	X1867069	LOCK NUT M4-.7
70	X1867070	IMPELLER 12-3/4"
71	X1867071	IMPELLER WASHER 6 X 38 X 4MM
72	X1867072	CAP SCREW M6-1 X 30
73	X1867073	COLLECTION DRUM GASKET
74	X1867074	HOSE CLAMP 1-3/4"
75	X1867075	VACUUM HOSE 1-1/2" X 60"
76	X1867076	HOSE CLAMP 8-1/2"
77	X1867077	POWER CORD 14G 3W 72" 5-15P
78	X1867078	VACUUM RING
79	X1867079	COLLECTION DRUM BAG 30" X 41"
80	X1867080	GROUND WIRE 18G 17-1/2"
81	X1867081	PHLP HD SCR 10-24 X 3/8
82	X1867082	HEX NUT 10-24
83	X1867083	FLANGE NUT 5/16-18
84	X1867084	LOCK HANDLE STOP
85	X1867085	KEY 7 X 7 X 29
86	X1867086	CAP SCREW M6-1 X 16
87	X1867087	EXT TOOTH WASHER #10



W1868 Parts List

REF	PART #	DESCRIPTION	REF	PART #	DESCRIPTION
1	X1868001	BASE	44	X1868044	PHLP HD SCR M6-1 X 10
2	X1868002	SUPPORT LEG	45	X1868045	PHLP HD SCR M5-.8 X 8
3	X1868003	IMPELLER HOUSING	46	X1868046	PADDLE SPINDLE BRACKET RETAINER
4	X1868004	COLLECTION DRUM, 20 GALLON	47	X1868047	PHLP HD SCR M5-.8 X 15
5	X1868005	INTAKE BARREL	49	X1868049	MAG SWITCH NHD MS1-12D 220V
6	X1868006	CYCLONE FUNNEL	49-1	X1868049-1	CONTACTOR NHD C-12D10 220V
7	X1868007	FILTER COVER PLATE	49-2	X1868049-2	E-STOP SWITCH NHD NPB22-H
8	X1868008	CANISTER FILTER ASSY 14-1/2" X 24"	49-3	X1868049-3	CONTACT BLOCK NHD CB-01
9	X1868009	COLLECTION DRUM LID	49-4	X1868049-4	REMOTE CONTROL RECEIVER
10	X1868010	CASTER 2", SWIVEL	49-5	X1868049-5	STRAIN RELIEF TYPE-3 M20-1.5
11	X1868011	HEX NUT 5/16-18	49-6	X1868049-6	MAG SWITCH BASE
12	X1868012	CASTER 2-1/2", LOCKING SWIVEL	49-7	X1868049-7	MAG SWITCH COVER
13	X1868013	INLET ADAPTER 7" X 4" X 3	49-8	X1868049-8	PHLP HD SCR 10-24 X 3/4
14	X1868014	LOCK HANDLE GUIDE	49-9	X1868049-9	HEX NUT 10-24
15	X1868015	MOUNTING PLATE	50	X1868050	FILTER BAG 20" X 23"
16	X1868016	SPRING BRACKET	51	X1868051	BAG CLAMP 15"
17	X1868017	COPPER PLATE	52	X1868052	INLET ADAPTER CAP 4"
19	X1868019	HEX BOLT 5/16-18 X 1	53	X1868053	PHLP HD SCR 10-24 X 3/8
20	X1868020	LOCK NUT 5/16-18	54	X1868054	FLANGE BOLT 5/16-18 X 3/4
21	X1868021	COMPRESSION SPRING 3 X 33 X 70	55	X1868055	FLAT HD SCR 5/16-18 X 1-1/4
22	X1868022	SPRING RETAINER	56	X1868056	BUTTON HD CAP SCR 5/16-18 X 1/2
23	X1868023	DRUM LOCK HANDLE	57	X1868057	COLLECTION DRUM LID LATCH
24	X1868024	LOCK HANDLE LINK	58	X1868058	FLEX HOSE 8" X 7"
25	X1868025	FLAT WASHER 3/8 PLASTIC	59	X1868059	FILTER PADDLE
26	X1868026	BUTTON HD CAP SCR 5/16-18 X 3/4	60	X1868060	HEX BOLT M6-1 X 12
27	X1868027	FLAT WASHER 5/16	61	X1868061	FOAM GASKET 120 X 140MM
28	X1868028	HEX BOLT 5/16-18 X 1-3/4	62	X1868062	DRUM WINDOW, 120 X 140MM ACRYLIC
29	X1868029	MOTOR 2HP 220V 1-PH	63	X1868063	RIVET 2 X 4MM
29-1	X1868029-1	MOTOR FAN COVER	64	X1868064	COLLECTION DRUM HANDLE
29-2	X1868029-2	MOTOR FAN	65	X1868065	PHLP HD SCR 1/4-20 X 5/8
29-3	X1868029-3	MOTOR JUNCTION BOX	66	X1868066	ACORN NUT 1/4-20
29-4	X1868029-4	R CAPACITOR 30M 250V 1-1/2 X 2-3/8	67	X1868067	REMOTE CONTROL
29-5	X1868029-5	S CAPACITOR 300M 125V 1-3/8 X 2-5/8	67-1	X1868067-1	REMOTE BATTERY TYPE A27 12V
29-6	X1868029-6	CIRCUIT BREAKER ZING EAR ZE-700 15A	68	X1868068	PHLP HD SCR M4-.7 X 8
29-7	X1868029-7	STRAIN RELIEF TYPE-2 15MM	69	X1868069	LOCK NUT M4-.7
29-8	X1868029-8	CENTRIFUGAL SWITCH	70	X1868070	IMPELLER 13"
29-9	X1868029-9	CONTACT PLATE	71	X1868071	IMPELLER WASHER 6 X 38 X 4MM
29-10	X1868029-10	MOTOR CORD W/PLUG 14G 3W 30"	72	X1868072	CAP SCREW M6-1 X 30
29-11	X1868029-11	BALL BEARING 6203-2RS	73	X1868073	COLLECTION DRUM GASKET
29-12	X1868029-12	BALL BEARING 6205-2RS	74	X1868074	HOSE CLAMP 1-3/4"
31	X1868031	FENDER WASHER 5/16	75	X1868075	VACUUM HOSE 1-1/2" X 60"
32	X1868032	RUBBER GASKET 43MM	76	X1868076	HOSE CLAMP 8-1/2"
33	X1868033	BEARING RETAINER, UPPER	77	X1868077	POWER CORD 14G 3W 72" 6-15P
34	X1868034	PHLP HD SCR M5-.8 X 8	78	X1868078	VACUUM RING
35	X1868035	SLEEVE BEARING 12 X 14 X 6MM	79	X1868079	COLLECTION DRUM BAG 30" X 41"
36	X1868036	FILTER PADDLE HANDLE	80	X1868080	GROUND WIRE 18G 17-1/2"
37	X1868037	FLANGE BOLT 5/16-18 X 1/2	81	X1868081	PHLP HD SCR 10-24 X 3/8
38	X1868038	BEARING RETAINER, LOWER	82	X1868082	HEX NUT 10-24
39	X1868039	PADDLE HANDLE SPINDLE	83	X1868083	FLANGE NUT 5/16-18
40	X1868040	HEX BOLT M6-1 X 16	84	X1868084	LOCK HANDLE STOP
41	X1868041	FILTER PADDLE SPINDLE	85	X1868085	KEY 7 X 7 X 29
42	X1868042	PADDLE SPINDLE BRACKET	86	X1868086	CAP SCREW M6-1 X 16
43	X1868043	FLAT WASHER 1/4	87	X1868087	EXT TOOTH WASHER #10

W1869 Parts List

REF	PART #	DESCRIPTION
1	X1869001	BASE
2	X1869002	SUPPORT LEG
3	X1869003	IMPELLER HOUSING
4	X1869004	COLLECTION DRUM, 38 GALLON
5	X1869005	INTAKE BARREL
6	X1869006	CYCLONE FUNNEL
7	X1869007	FILTER COVER PLATE
8	X1869008	CANISTER FILTER ASSY 14-1/2" X 39-3/8"
9	X1869009	COLLECTION DRUM LID
10	X1869010	CASTER 2", SWIVEL
11	X1869011	HEX NUT 5/16-18
12	X1869012	CASTER 2-1/2", LOCKING SWIVEL
13	X1869013	INLET ADAPTER 8" X 4" X 3
14	X1869014	LOCK HANDLE GUIDE
15	X1869015	MOUNTING PLATE
16	X1869016	SPRING BRACKET
17	X1869017	COPPER PLATE
19	X1869019	HEX BOLT 5/16-18 X 1
20	X1869020	LOCK NUT 5/16-18
21	X1869021	COMPRESSION SPRING 3 X 33 X 70
22	X1869022	SPRING RETAINER
23	X1869023	DRUM LOCK HANDLE
24	X1869024	LOCK HANDLE LINK
25	X1869025	FLAT WASHER 3/8 PLASTIC
26	X1869026	BUTTON HD CAP SCR 5/16-18 X 3/4
27	X1869027	FLAT WASHER 5/16
28	X1869028	HEX BOLT 5/16-18 X 1-3/4
29	X1869029	MOTOR 3HP 220V 1-PH
29-1	X1869029-1	MOTOR FAN COVER
29-2	X1869029-2	MOTOR FAN
29-3	X1869029-3	MOTOR JUNCTION BOX
29-4	X1869029-4	R CAPACITOR 50M 250V 1-1/2 X 2-3/8
29-5	X1869029-5	S CAPACITOR 400M 125V 1-3/8 X 2-3/4
29-6	X1869029-6	CIRCUIT BREAKER ZING EAR ZE-700 50A
29-7	X1869029-7	STRAIN RELIEF TYPE-2 15MM
29-8	X1869029-8	CENTRIFUGAL SWITCH
29-9	X1869029-9	CONTACT PLATE
29-10	X1869029-10	MOTOR CORD W/PLUG 12G 3W 30"
29-11	X1869029-11	BALL BEARING 6205-2RS
29-12	X1869029-12	BALL BEARING 6206-2RS
31	X1869031	FENDER WASHER 5/16
32	X1869032	RUBBER GASKET 43MM
33	X1869033	BEARING RETAINER, UPPER
34	X1869034	PHLP HD SCR M5-.8 X 8
35	X1869035	SLEEVE BEARING 12 X 14 X 6MM
36	X1869036	FILTER PADDLE HANDLE
37	X1869037	FLANGE BOLT 5/16-18 X 1/2
38	X1869038	BEARING RETAINER, LOWER
39	X1869039	PADDLE HANDLE SPINDLE
40	X1869040	HEX BOLT M6-1 X 16
41	X1869041	FILTER PADDLE SPINDLE
42	X1869042	PADDLE SPINDLE BRACKET
43	X1869043	FLAT WASHER 1/4
44	X1869044	PHLP HD SCR M6-1 X 10

REF	PART #	DESCRIPTION
45	X1869045	PHLP HD SCR M5-.8 X 8
46	X1869046	PADDLE SPINDLE BRACKET RETAINER
47	X1869047	PHLP HD SCR M5-.8 X 15
49	X1869049	MAG SWITCH NHD MS1-18D 220V
49-1	X1869049-1	CONTACTOR NHD C-18D10 220V
49-2	X1869049-2	E-STOP SWITCH NHD NPB22-H
49-3	X1869049-3	CONTACT BLOCK NHD CB-01
49-4	X1869049-4	REMOTE CONTROL RECEIVER
49-5	X1869049-5	STRAIN RELIEF TYPE-3 M20-1.5
49-6	X1869049-6	MAG SWITCH BASE
49-7	X1869049-7	MAG SWITCH COVER
49-8	X1869049-8	PHLP HD SCR 10-24 X 3/4
49-9	X1869049-9	HEX NUT 10-24
50	X1869050	FILTER BAG 20" X 23"
51	X1869051	BAG CLAMP 15"
52	X1869052	INLET ADAPTER CAP 4"
53	X1869053	PHLP HD SCR 10-24 X 3/8
54	X1869054	FLANGE BOLT 5/16-18 X 3/4
55	X1869055	FLAT HD SCR 5/16-18 X 1-1/4
56	X1869056	BUTTON HD CAP SCR 5/16-18 X 1/2
57	X1869057	COLLECTION DRUM LID LATCH
58	X1869058	FLEX HOSE 12" X 9-1/2"
59	X1869059	FILTER PADDLE
60	X1869060	HEX BOLT M6-1 X 16
61	X1869061	FOAM GASKET, 120 X 140MM
62	X1869062	DRUM WINDOW, 120 X 140MM ACRYLIC
63	X1869063	RIVET 2 X 4MM
64	X1869064	COLLECTION DRUM HANDLE
65	X1869065	PHLP HD SCR 1/4-20 X 5/8
66	X1869066	ACORN NUT 1/4-20
67	X1869067	REMOTE CONTROL
67-1	X1869067-1	REMOTE BATTERY TYPE A27 12V
68	X1869068	PHLP HD SCR M4-.7 X 8
69	X1869069	LOCK NUT M4-.7
70	X1869070	IMPELLER 15"
71	X1869071	IMPELLER WASHER 6 X 38 X 4MM
72	X1869072	CAP SCREW M6-1 X 30
73	X1869073	COLLECTION DRUM GASKET
74	X1869074	HOSE CLAMP 1-3/4"
75	X1869075	VACUUM HOSE 1-1/2" X 60"
76	X1869076	HOSE CLAMP 8-1/2"
77	X1869077	POWER CORD 12G 3W 72" 6-20P
78	X1869078	VACUUM RING
79	X1869079	COLLECTION DRUM BAG 39" X 56"
80	X1869080	GROUND WIRE 18G 17-1/2"
81	X1869081	PHLP HD SCR 10-24 X 3/8
82	X1869082	HEX NUT 10-24
83	X1869083	FLANGE NUT 5/16-18
84	X1869084	LOCK HANDLE STOP
85	X1869085	KEY 7 X 7 X 30
86	X1869086	CAP SCREW M6-1 X 16
87	X1869087	EXT TOOTH WASHER #10
88	X1869088	HEX BOLT 3/8-16 X 1/2

W1867/W1868 Labels & Cosmetics

W1867 W1868

**MODEL W1867
1.5 HP CYCLONE
DUST COLLECTOR**

Specifications

Motor: 1.5 HP, 110V, Single-Phase, 60 Hz
Full-Load Current Rating: 15A
Airflow Performance: 860 CFM @ 1.8" SP
Max. Static Pressure: 5.2"
Inlet Size: 6"
Collection Drum Size: 20 Gallons
Filter Rating: 99.9% at 0.2 - 1 Micron
Cartridge Filter: 14-1/2" x 24"
Replacement Filter: D4892
Replacement Drum Bag: D4894
Weight: 265 lbs.

WARNING!

To reduce the risk of serious injury when using this machine:

1. Read and understand owner's manual before operating.
2. Always wear approved eye protection and respirator.
3. Only plug power cord into a grounded outlet.
4. Only use this machine to collect wood dust/chips; never use to collect glass, metal, liquids, asbestos, silica, animal parts, biohazards, burning materials/ashes, etc.
5. Always disconnect power before servicing or cleaning.
6. Do not expose to rain or wet areas.
7. Keep hands, long hair, and loose clothing away from inlet.
8. Never leave machine unattended during operation.
9. Do not use if cord, plug, or any other electrical equipment becomes damaged—promptly repair!
10. Do not use without dust bag or filters in place.
11. Do not connect cord to power supply with wet hands.
12. Grasp and pull the plug, not the cord, when unplugging.
13. Always wear a respirator when emptying bags.
14. Do not modify machine in any way.
15. Prevent unauthorized use by children or untrained users; restrict access or disable machine when unattended.

____ Date
____ SSI

SSI, for Woodstock in Taiwan

**MODEL W1868
2 HP CYCLONE
DUST COLLECTOR**

Specifications

Motor: 2 HP, 220V, Single-Phase, 60 Hz
Full-Load Current Rating: 9A
Airflow Performance: 1020 CFM @ 1.2" SP
Max. Static Pressure: 10.2"
Inlet Size: 7"
Collection Drum Size: 20 Gallons
Filter Rating: 99.9% at 1 Micron
Cartridge Filter: 14-1/2" x 24"
Replacement Filter: D4892
Replacement Drum Bag: D4894
Weight: 295 lbs.

WARNING!

To reduce the risk of serious injury when using this machine:

1. Read and understand owner's manual before operating.
2. Always wear approved eye protection and respirator.
3. Only plug power cord into a grounded outlet.
4. Only use this machine to collect wood dust/chips; never use to collect glass, metal, liquids, asbestos, silica, animal parts, biohazards, burning materials/ashes, etc.
5. Always disconnect power before servicing or cleaning.
6. Do not expose to rain or wet areas.
7. Keep hands, long hair, and loose clothing away from inlet.
8. Never leave machine unattended during operation.
9. Do not use if cord, plug, or any other electrical equipment becomes damaged—promptly repair!
10. Do not use without dust bag or filters in place.
11. Do not connect cord to power supply with wet hands.
12. Grasp and pull the plug, not the cord, when unplugging.
13. Always wear a respirator when emptying bags.
14. Do not modify machine in any way.
15. Prevent unauthorized use by children or untrained users; restrict access or disable machine when unattended.

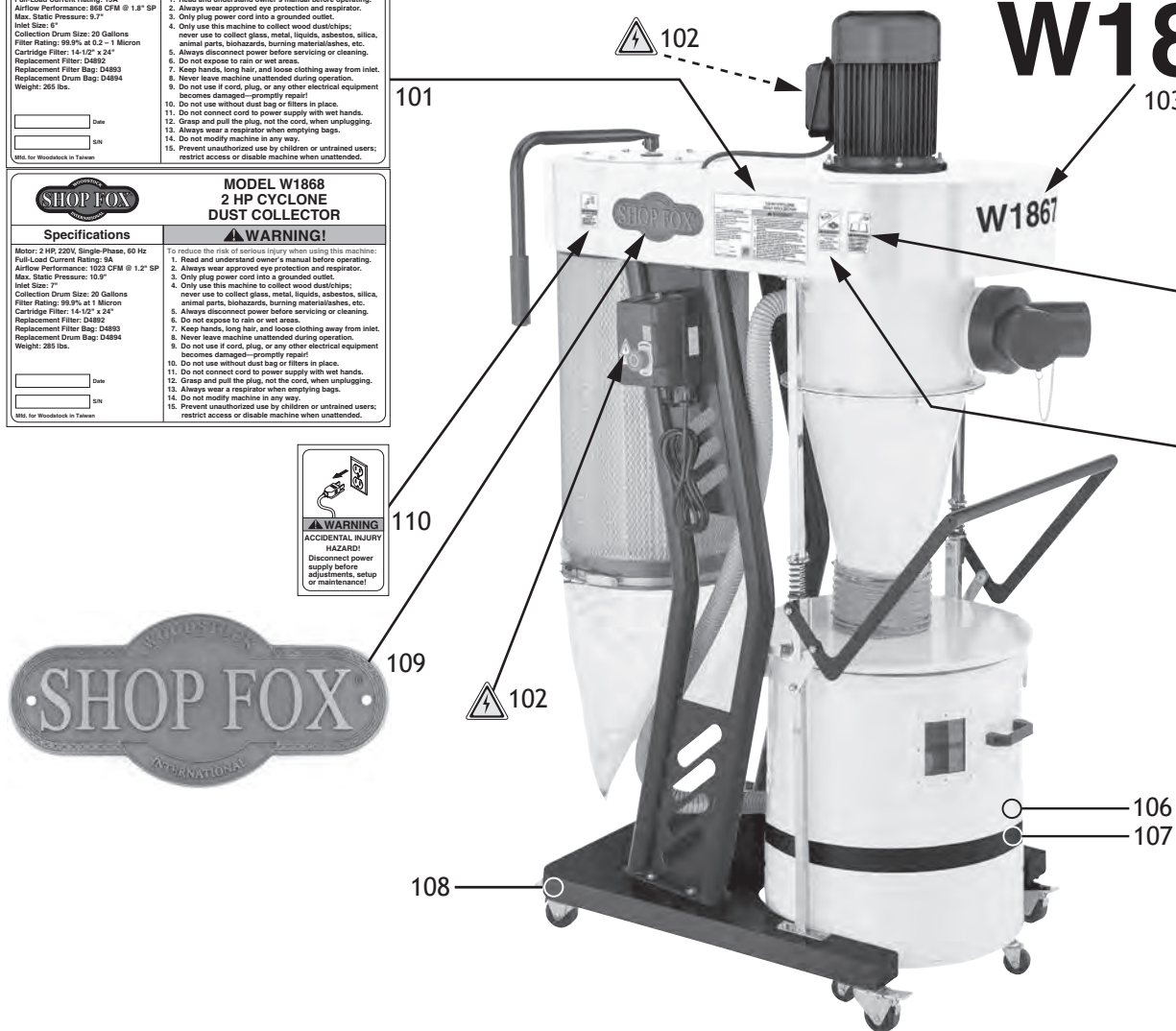
____ Date
____ SSI

SSI, for Woodstock in Taiwan

WARNING!
ACCIDENTAL INJURY HAZARD!
Disconnect power supply before adjustments, setup or maintenance!

WARNING!
READ and UNDERSTAND MANUAL to prevent serious injury! If a manual is not available, DO NOT use machine! Instead, go to www.shopfox.com or call (360) 734-3482.

WARNING!
INJURY HAZARD!
To reduce risk of short and long-term injury, wear safety glasses, hearing protection, and a respirator when using this machine.



REF	PART #	DESCRIPTION
101	X1867101	MACHINE ID LABEL (W1867)
101	X1868101	MACHINE ID LABEL (W1868)
102	X1867102	ELECTRICITY WARNING LABEL
103	X1867103	MODEL NO. LABEL (W1867)
103	X1868103	MODEL NO. LABEL (W1868)
104	X1867104	READ MANUAL LABEL

REF	PART #	DESCRIPTION
105	X1867105	EYE/EAR/LUNG WARNING LABEL
106	X1867106	TOUCH-UP PAINT, SHOP FOX WHITE
107	X1867107	BLACK TRIM TAPE
108	X1867108	TOUCH-UP PAINT, SHOP FOX BLACK
109	X1867109	SHOP FOX NAMEPLATE-MEDIUM
110	X1867110	DISCONNECT POWER LABEL

⚠ WARNING

Safety labels warn about machine hazards and how to prevent serious personal injury. The owner of this machine **MUST** maintain the original location and readability of all labels on this machine. If any label is removed or becomes unreadable, **REPLACE** that label before allowing machine to be operated again. Contact us at (360) 734-3482 or www.woodstockint.com to order new labels.

W1869 Labels & Cosmetics

W1869



REF	PART #	DESCRIPTION
101	W1869101	MACHINE ID LABEL
102	W1869102	ELECTRICITY WARNING LABEL
103	W1869103	MODEL NO. LABEL
104	W1869104	READ MANUAL LABEL
105	W1869105	EYE/EAR/LUNG WARNING LABEL

REF	PART #	DESCRIPTION
106	W1869106	TOUCH-UP PAINT, SHOP FOX WHITE
107	W1869107	BLACK TRIM TAPE
108	W1869108	TOUCH-UP PAINT, SHOP FOX BLACK
109	W1869109	SHOP FOX NAMEPLATE-MEDIUM
110	W1869110	DISCONNECT POWER LABEL

⚠ WARNING

Safety labels warn about machine hazards and how to prevent serious personal injury. The owner of this machine **MUST** maintain the original location and readability of all labels on this machine. If any label is removed or becomes unreadable, **REPLACE** that label before allowing machine to be operated again. Contact us at (360) 734-3482 or www.woodstockint.com to order new labels.