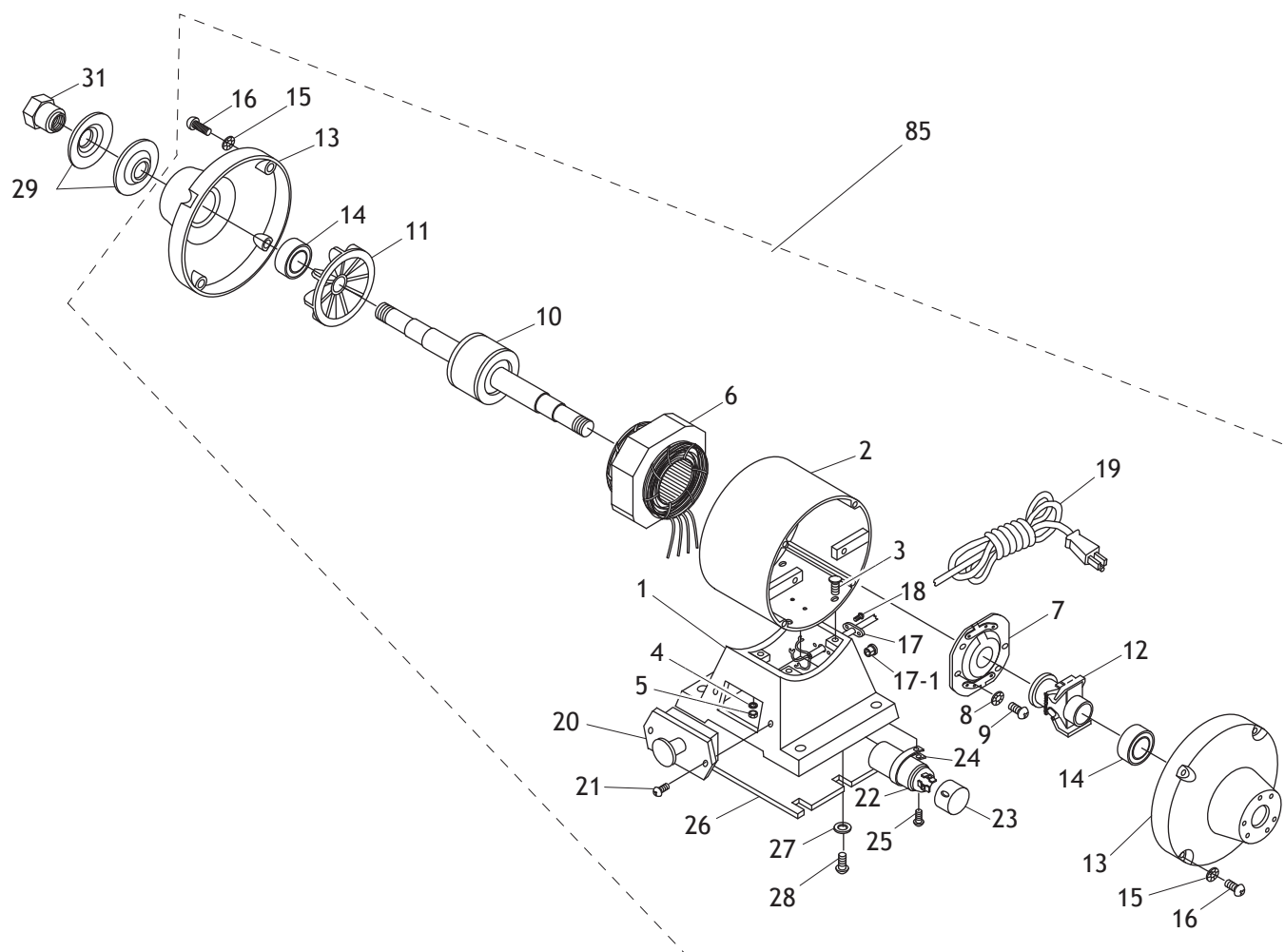


PARTS

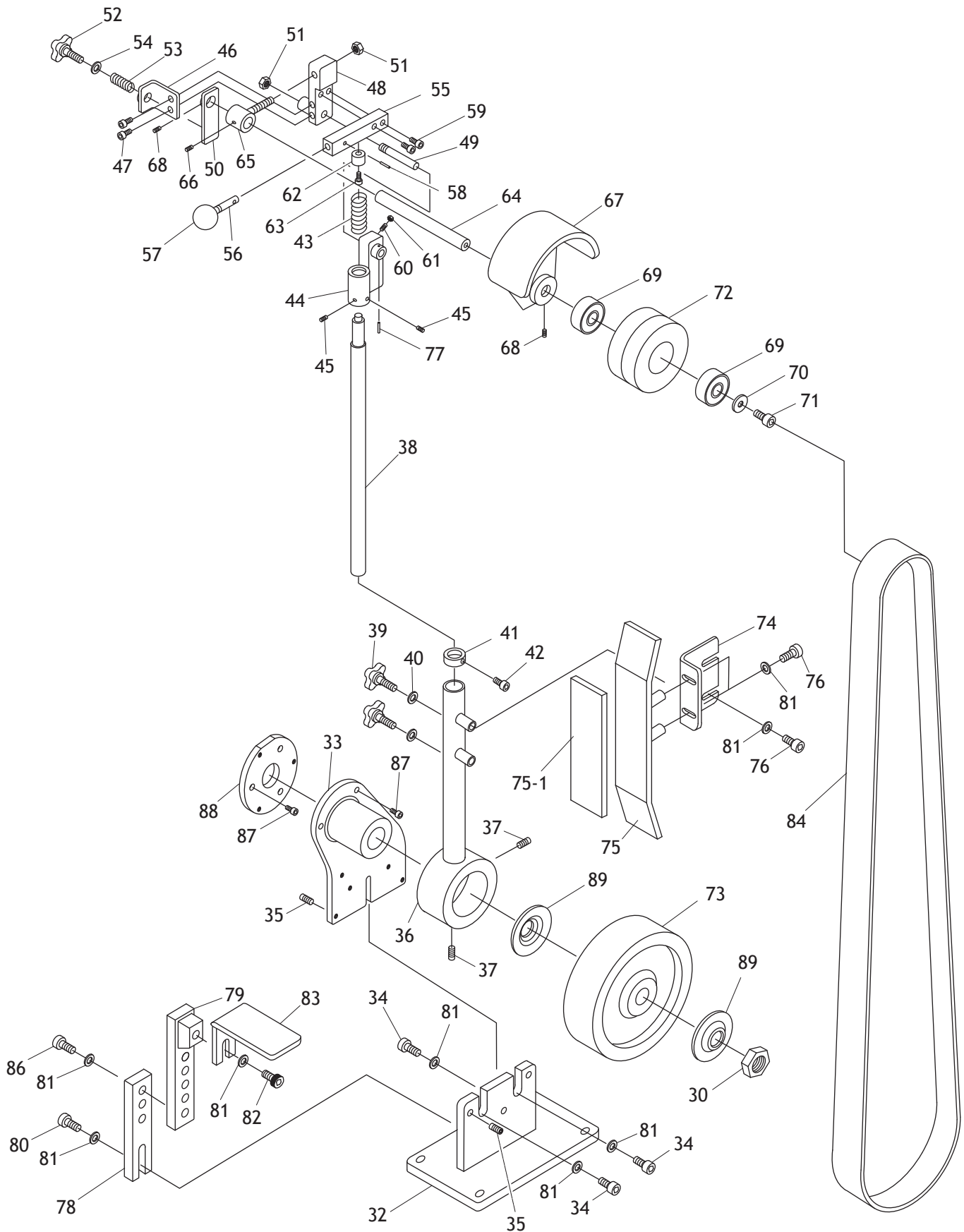
Motor Assembly



REF	PART #	DESCRIPTION
1	X1843001	BASE
2	X1843002	MOTOR CASE
3	X1843003	PHLP HD SCR 5/16-18 X 1-1/4
4	X1843004	LOCK WASHER 5/16
5	X1843005	HEX NUT 5/16-18
6	X1843006	STATOR WINDING
7	X1843007	CONTACT PLATE
8	X1843008	LOCK WASHER #10
9	X1843009	PHLP HD SCR 10-24 X 1/2
10	X1843010	ROTOR/SHAFT
11	X1843011	FAN
12	X1843012	CENTRIFUGAL SWITCH
13	X1843013	END COVER
14	X1843014	BALL BEARING 6206ZZ
15	X1843015	LOCK WASHER 1/4
16	X1843016	PHLP HD SCR 1/4-20 X 5/8

17	X1843017	CORD BRACKET
17-1	X1843017-1	STRAIN RELIEF 3/8" TYPE-1
18	X1843018	PHLP HD SCR 10-24 X 1-1/4
19	X1843019	POWER CORD 16G 3W 73"L 5-15P
20	X1843020	PULL ON/PUSH OFF SWITCH 20A 250V
21	X1843021	PHLP HD SCR 10-24 X 1/2
22	X1843022	S CAPACITOR 400M 125V 1-3/4 X 3-3/8
23	X1843023	CAPACITOR CAP
24	X1843024	CAPACITOR CLAMP
25	X1843025	PHLP HD SCR 10-24 X 3/8
26	X1843026	BOTTOM PLATE
27	X1843027	FLAT WASHER #10
28	X1843028	PHLP HD SCR 10-24 X 3/8
29	X1843029	WHEEL FLANGE 19.2 X 64.7 X 2.7MM
31	X1843031	ARBOR W/ COLLAR NUT 5/8-18 LH
85	X1843085	MOTOR ASSEMBLY

Sanding Assembly

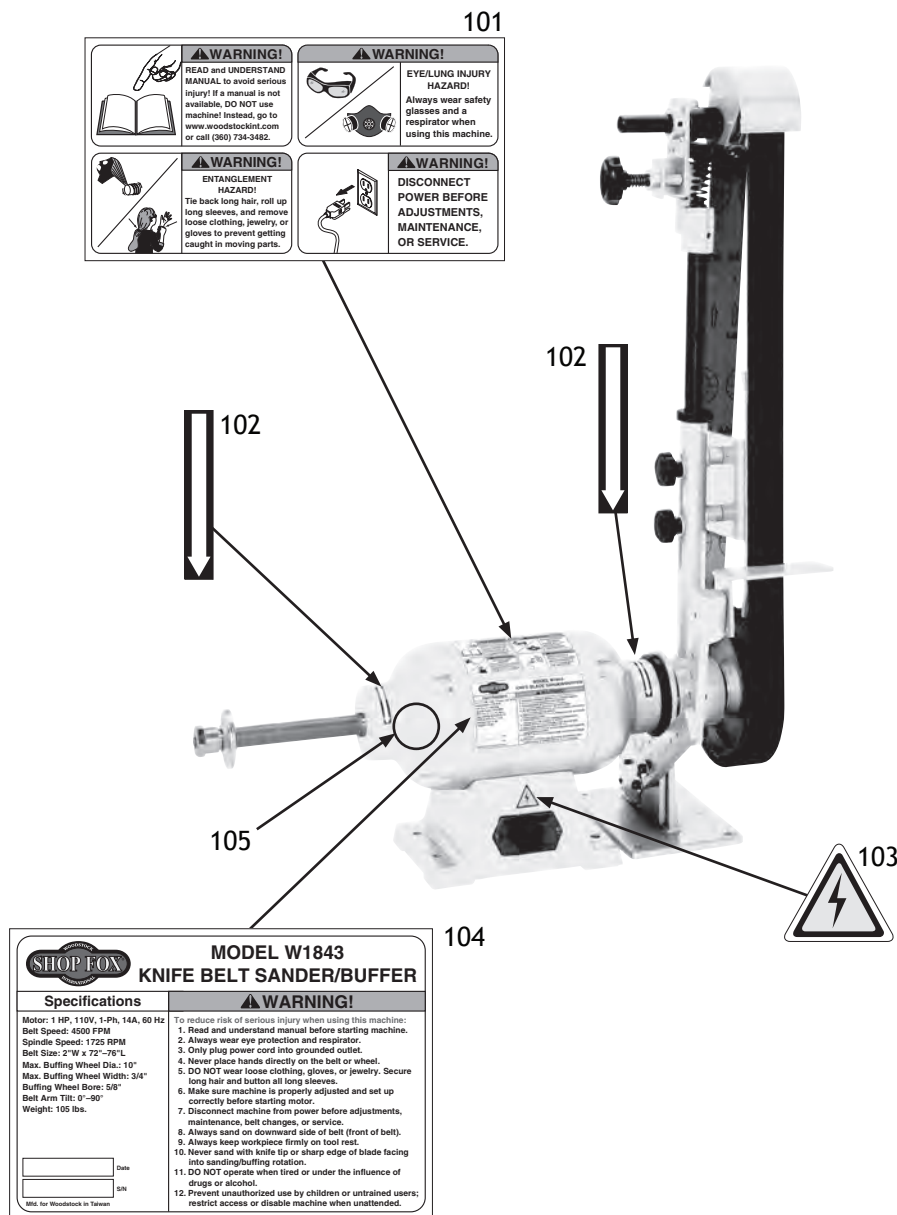


Sanding Assembly Parts List

REF	PART #	DESCRIPTION
30	XP1843030	HEX NUT 3/4-16
32	X1843032	PIVOT ARM MOUNTING BRACKET
33	X1843033	PIVOT BRACKET W/O BUSHING
34	X1843034	CAP SCREW 5/16-18 X 1
35	X1843035	SET SCREW 5/16-18 X 1/2
36	X1843036	PIVOT ARM
37	X1843037	SET SCREW 3/8-16 X 1/2
38	X1843038	SHAFT 1"
39	X1843039	KNOB 3/8-16 5-LOBE
40	X1843040	FLAT WASHER 5/16
41	X1843041	COLLAR FOR 1" SHAFT
42	X1843042	CAP SCREW 1/4-28 x 5/8
43	X1843043	COMPRESSION SPRING 22 X 87 X 3
44	X1843044	UPPER SHAFT BRACKET
45	X1843045	SET SCREW 5/16-18 X 1/4
46	X1843046	TRACKING BRACKET
47	X1843047	CAP SCREW 1/4-20 X 1/2
48	X1843048	PIVOT BRACKET
49	X1843049	TENSION BAR SHAFT
50	X1843050	TRACKING LEVER
51	X1843051	LOCK NUT 3/8-16
52	X1843052	KNOB 1/2-20 6-LOBE
53	X1843053	COMPRESSION SPRING 18 X 56 X 2
54	X1843054	FLAT WASHER 1/2
55	X1843055	TENSION BAR 4-1/8 X 3/4 X 3/4
56	X1843056	TENSION KNOB SHAFT 3/8-16 X 3
57	X1843057	TENSION KNOB 1-1/4
58	X1843058	ROLL PIN 5 X 20
59	X1843059	CAP SCREW 5/16-18 X 3/4
60	X1843060	SET SCREW 1/4-20 X 5/8

REF	PART #	DESCRIPTION
61	X1843061	HEX NUT 1/4-20
62	X1843062	SPRING BUSHING
63	X1843063	CAP SCREW 1/4-20 X 1
64	X1843064	AXLE
65	X1843065	PIVOT BUSHING
66	X1843066	SET SCREW 1/4-20 X 3/8
67	X1843067	WHEEL GUARD
68	X1843068	SET SCREW 5/16-18 X 1/4
69	X1843069	BALL BEARING 6204ZZ
70	X1843070	FLAT WASHER 1/4
71	X1843071	CAP SCREW 1/4-20 X 1/2
72	X1843072	IDLER WHEEL
73	X1843073	DRIVE WHEEL 10"
74	X1843074	PLATEN BRACKET
75	X1843075	PLATEN
75-1	X1843075-1	GRAPHITE PAD 2"W X 9"L
76	X1843076	CAP SCREW 5/16-18 X 3/4
77	X1843077	ROLL PIN 1/8 X 1
78	X1843078	TOOL REST SUPPORT LOWER
79	X1843079	TOOL REST SUPPORT UPPER
80	X1843080	CAP SCREW 5/16-18 X 1
81	X1843081	FLAT WASHER 5/16
82	X1843082	CAP SCREW 5/16-18 X 3/4
83	X1843083	TOOL REST
84	X1843084	SANDING BELT 2" X 72" 100-GRIT
86	X1843086	CAP SCREW 5/16-18 X 1-1/4
87	X1843087	CAP SCREW 1/4-20 X 1/2
88	X1843088	MOUNTING ADAPTER
89	X1843089	WHEEL FLANGE 16.1 X 73.2 X 2.8MM

Labels & Cosmetics



REF	PART #	DESCRIPTION
101	X1843101	COMBO WARNING LABEL
102	X1843102	ROTATION DIRECTION LABEL
103	X1843103	ELECTRICITY LABEL

REF	PART #	DESCRIPTION
104	X1843104	MACHINE ID LABEL
105	X1843105	TOUCH-UP PAINT, SHOP FOX WHITE

WARNING

Safety labels warn about machine hazards and how to prevent serious personal injury. The owner of this machine **MUST** maintain the original location and readability of all labels on this machine. If any label is removed or becomes unreadable, **REPLACE** that label before allowing machine to be operated again. Contact us at (360) 734-3482 or www.woodstockint.com to order new labels.