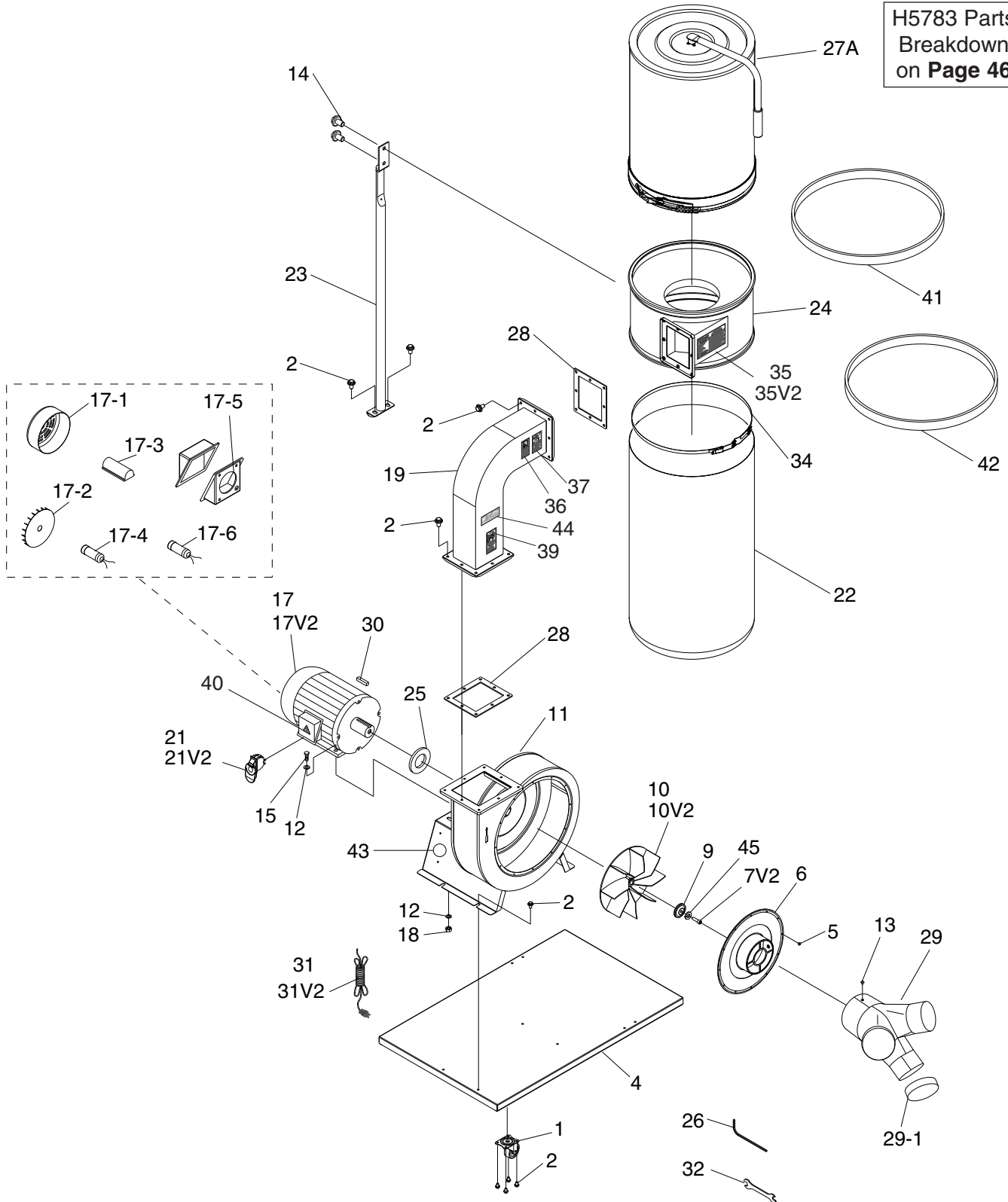


SECTION 10: PARTS

G0548ZP Main Breakdown

H5783 Parts
Breakdown
on **Page 46**



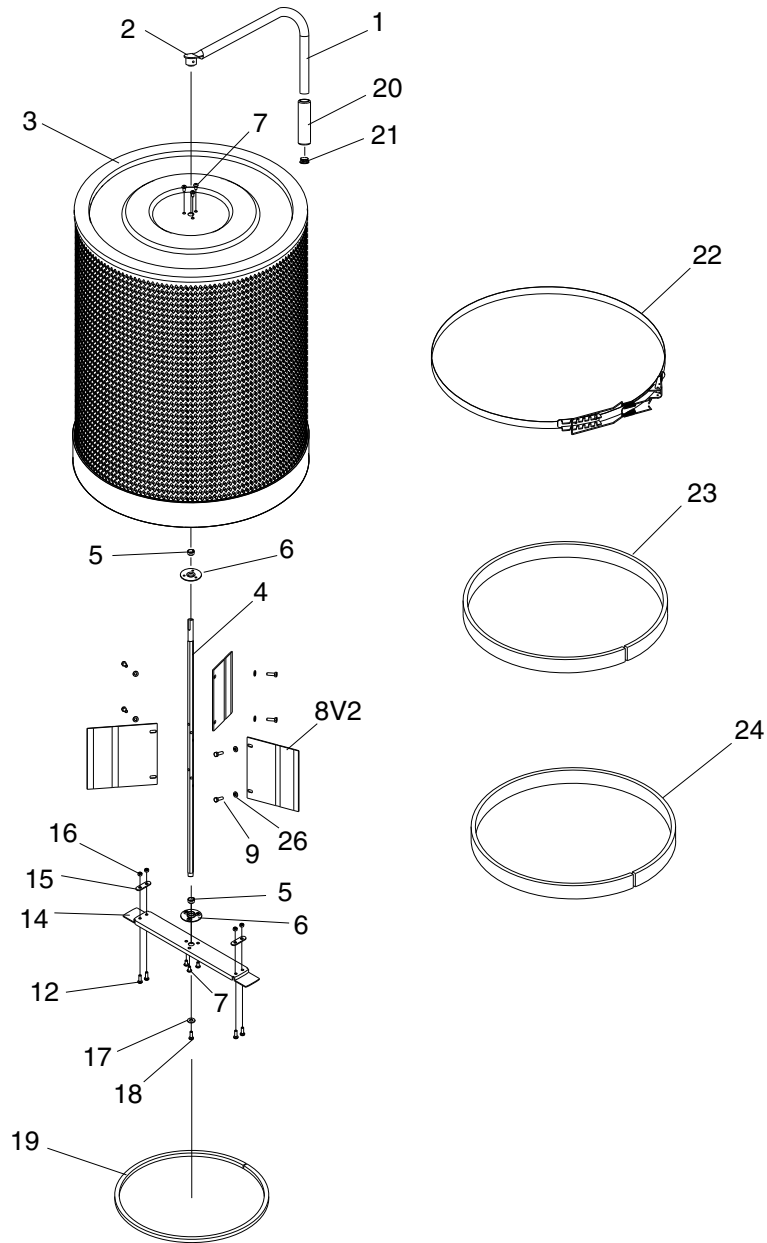
G0548ZP Main Parts List

REF	PART #	DESCRIPTION
1	P1028Z2001	CASTERS
2	PFB01	FLANGE BOLT 5/16-18 X 1/2
4	P1028Z2004	BASE PLATE
5	PS06	PHLP HD SCR 10-24 X 3/8
6	P0548ZP006	6" INLET COVER
7V2	P1028Z2007V2	CAP SCREW M6-1 X 30 LH PRE-COATED
9	P0548009	IMPELLER WASHER 7 X 40 X 4
10	P1029Z2010V2	IMPELLER 12-3/4" ALUMINUM V2.09.11
11	P0548ZP011	COLLECTOR BODY
12	PW07	FLAT WASHER 5/16
13	PS06	PHLP HD SCR 10-24 X 3/8
14	PFB01	FLANGE BOLT 5/16-18 X 1/2
15	PB03	HEX BOLT 5/16-18 X 1
17	P0548ZP017	MOTOR 2HP 220V 1PH
17-1	P0548ZP017-1	MOTOR FAN COVER
17-2	P0548Z017V2-2	MOTOR FAN
17-3	P0548ZP017-3	CAPACITOR COVER
17-4	PC300B	S CAPACITOR 300M 125V 1-3/4 X 3-3/8
17-5	P0548ZP017-5	MOTOR WIRING JUNCTION BOX
17-6	PC030C	R CAPACITOR 30M 250V 1-3/8 X 2-3/8
18	PN02	HEX NUT 5/16"-18
19	P0548ZP019	OUTLET CONNECTOR
21	P1030Z2015V2	PADDLE SWITCH V2.09.11

REF	PART #	DESCRIPTION
22	T20543	COLLECTION BAG
23	P0548Z023	COLLECTOR SUPPORT
24	P0548ZP024	COLLECTOR
25	P0548Z025	SPACER
26	PAW05M	WRENCH HEX 5MM
27A	H5783	COMPLETE CANISTER ASSY
28	P1028Z2028	RUBBER GASKET
29	P0548ZP029	INLET
29-1	P0548Z029-1	INLET CAP
30	PK28M	KEY 7 X 7 X 29
31	P1029Z2013V2	PWR CORD 14G 3W 6' 6-15 V2.09.11
32	PWR1012	WRENCH 10 X 12MM OPEN-END
34	P1028Z2031	BELT CLAMP
35	P0548ZP035	MACHINE ID LABEL
36	PLABEL-12	READ MANUAL 2W X 3.3H
37	PLABEL-57	EYE/LUNG LABEL
39	PLABEL-59	NO HAND IN INLET LABEL
40	PLABEL-14	ELECTRICITY LABEL 1.4W X 1.2H
41	P0548Z041	FOAM STRIP 5 X 42MM
42	P0548Z042	FOAM STRIP 4 X 20MM
43	PPAINT-24	POLAR BEAR PAINT
44	PLABEL-81	POLAR BEAR LOGO 1 X 3-3/4
45	PLW03M	LOCK WASHER 6MM



H5783 Canister Filter Assembly

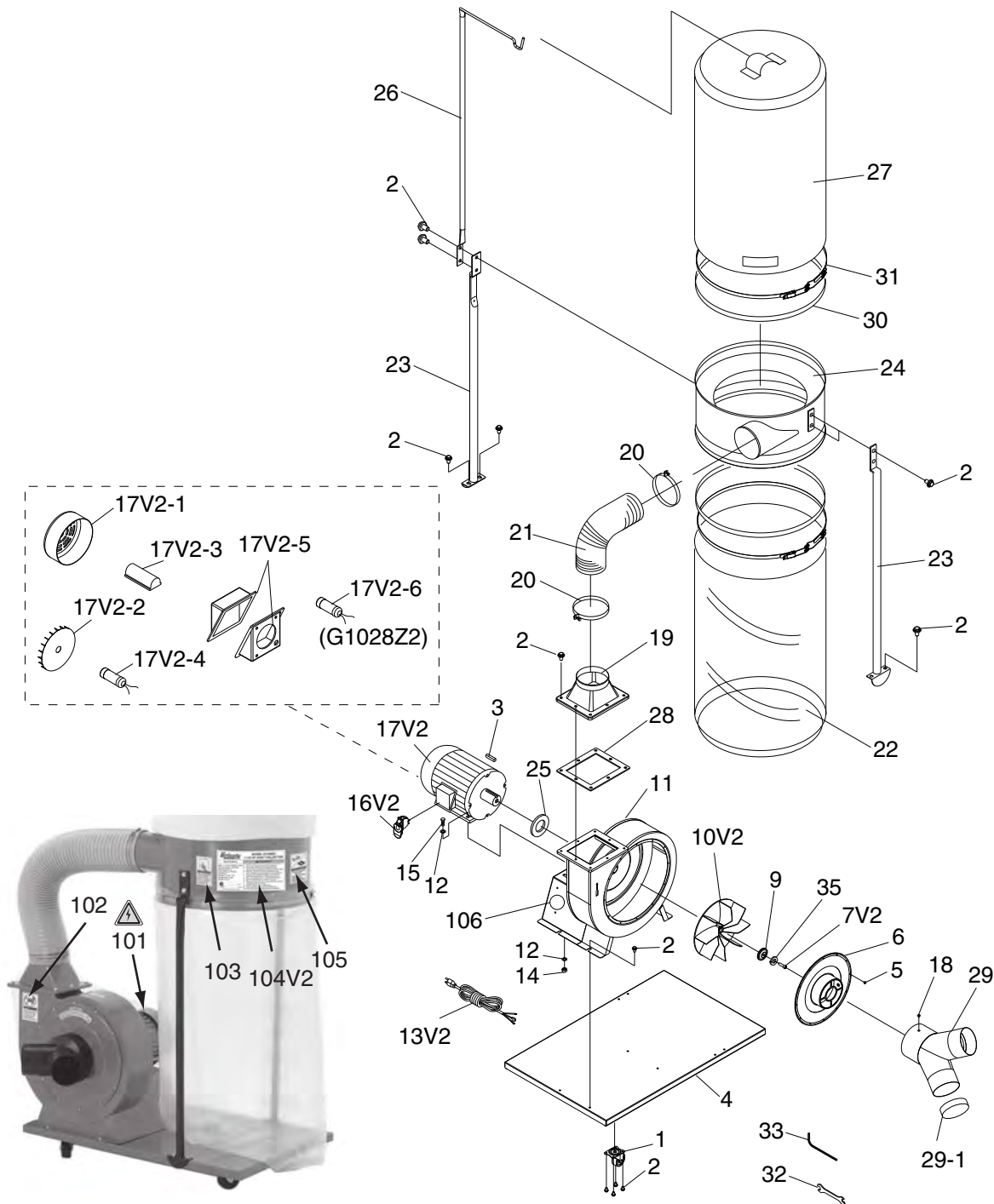


REF	PART #	DESCRIPTION
1	PH5783001	CLEANING HANDLE
2	PB83M	HEX BOLT M6-1 X 16
3	PH5783003	CANISTER FILTER
4	PH5783004	HEX SPINDLE
5	PH5783005	THRUST BEARING 12 X 14 X 6
6	PH5783006	BEARING PLATE
7	PS09M	PHLP HD SCR M5-.8 X 10
8V2	PH5783008V2	PLASTIC FLAP BOARD V2.09.11
9	PS68M	PHLP HD SCR M6-1 X 10
12	PS20M	PHLP HD SCR M5-.8 X 15
14	PH5783014	BOTTOM PLATE

REF	PART #	DESCRIPTION
15	PH5783015	SUPPORT TAB
16	PN06M	HEX NUT M5-.8
17	PW06	FLAT WASHER 1/4
18	PS68M	PHLP HD SCR M6-1 X 10
19	PH5783019	SPONGE GASKET 10 X 15MM
20	PH5783020	HANDLE SLEEVE
21	PH5783021	HANDLE CAP
22	PH5783022	QUICK RELEASE CLAMP
23	PH5783023	FOAM STRIP 20MM X 156CM
24	PH5783024	FOAM STRIP 42MM X 156CM
26	PW03M	FLAT WASHER 6MM



G1028Z2/G1029Z2 Main Breakdown



⚠️ WARNING

Safety labels warn about machine hazards and ways to prevent injury. The owner of this machine **MUST** maintain the original location and readability of the labels on the machine. If any label is removed or becomes unreadable, **REPLACE** that label before using the machine again. Contact Grizzly at (800) 523-4777 or www.grizzly.com to order new labels.



G1028Z2 Main Parts List

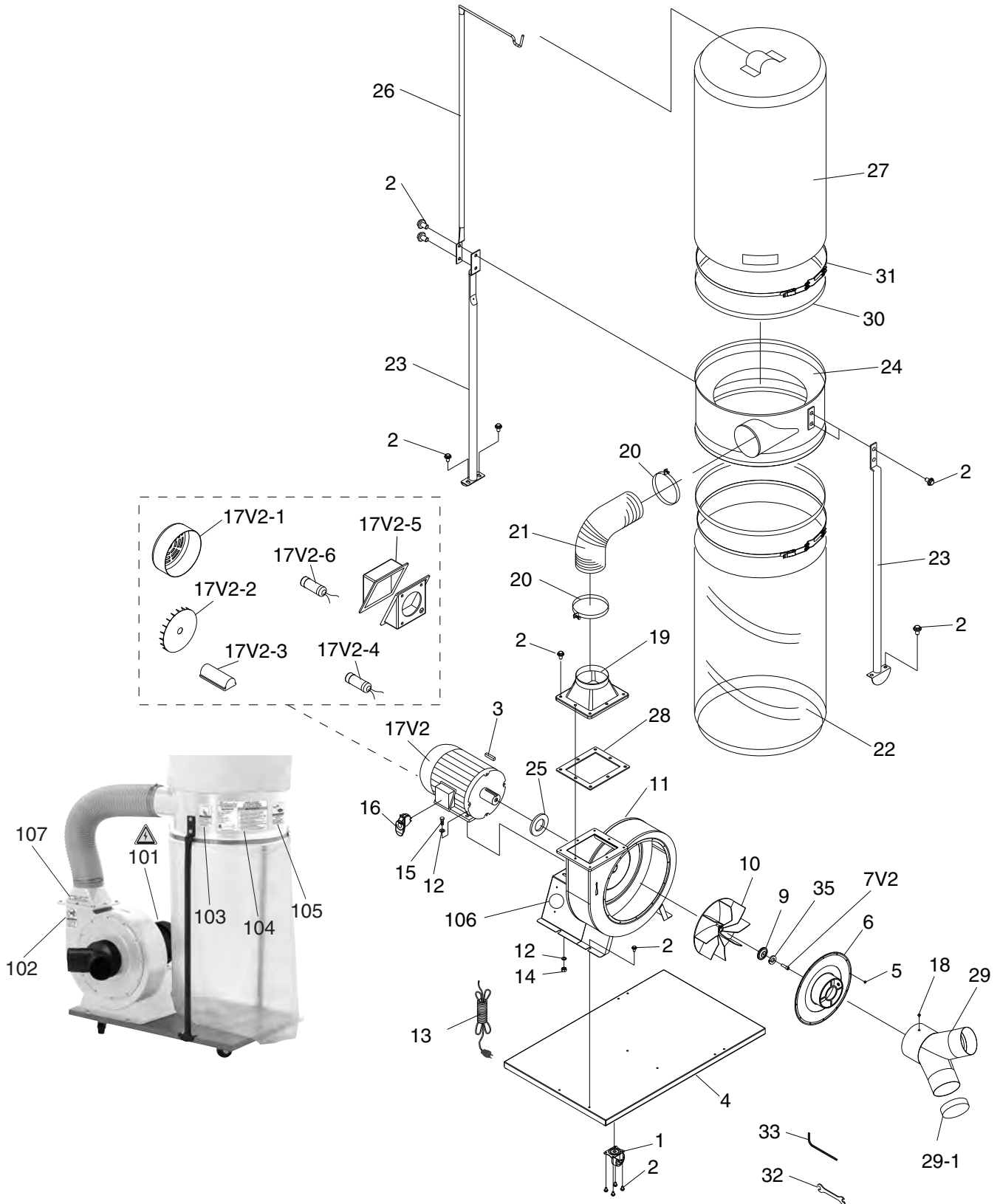
REF	PART #	DESCRIPTION	REF	PART #	DESCRIPTION
1	P1028Z2001	CASTER	19	P1028Z2019	OUTLET
2	PFB01	FLANGE BOLT 5/16-18 X 1/2	20	P1028Z2020	HOSE CLAMP 5"
3	PK32M	KEY 6 X 6 X 28	21	P1028Z2021	HOSE 5"
4	P1028Z2004	BASE PLATE	22	T20543	LOWER PLASTIC BAG
5	PS06	PHLP HD SCR 10-24 X 3/8	23	P1028Z2023	COLLECTOR SUPPORT
6	P1028Z2006	INLET COVER 6"	24	P1028Z2024	COLLECTOR
7V2	P1028Z2007V2	CAP SCREW M6-1 X 30 LH PRE-COATED	25	P1028Z2025	SPACER
9	P1028Z2009	IMPELLER WASHER	26	P1028Z2026	UPPER BAG SUPPORT
10V2	P1028Z2010V2	IMPELLER 12-3/4" X 3/4" ALUMINUM V2.09.11	27	G5556	2.5 MICRON FILTER BAG
11	P1028Z2011	COLLECTOR BODY	28	P1028Z2028	GASKET
12	PW07	FLAT WASHER 5/16	29	P1028Z2029	Y-INLET 6 X 4 X 4"
13V2	P1028Z2013V2	POWER CORD 14G 3W 6' 5-15 V2.09.11	29-1	P1028Z2029-1	INLET CAP 4"
14	PN02	HEX NUT 5/16-18	30	P1028Z2030	FOAM STRIP 5 X 20MM
15	PB03	HEX BOLT 5/16-18 X 1	31	P1028Z2031	BELT CLAMP
16V2	P1028Z2016V2	PADDLE SWITCH V2.09.11	32	PWR1012	WRENCH 10 X 12MM OPEN-END
17V2	P1028Z2017V2	MOTOR 1-1/2HP 120V/240V 1PH V2.09.11	33	PAW05M	WRENCH HEX 5MM
17V2-1	P1028Z2017V2-1	MOTOR FAN COVER	35	PLW03M	LOCK WASHER 6MM
17V2-2	P1028Z2017V2-2	MOTOR FAN	101	PLABEL-14	ELECTRICITY LABEL
17V2-3	P1028Z2017V2-3	CAPACITOR COVER	102	PLABEL-59	HANDS/OUTLET LABEL
17V2-4	PC300G	S CAPACITOR 300M 125V 1-3/4 X 3-3/8	103	PLABEL-12A	READ MANUAL LABEL
17V2-5	P1028Z2017V2-5	JUNCTION BOX	104V2	P1028Z2104V2	MACHINE ID LABEL CSA V2.09.11
17V2-6	P1028Z2017V2-6	R CAPACITOR 45M 250V 1-3/4 x 2-3/8	105	PLABEL-57	EYE/LUNG LABEL
18	PS06	PHLP HD SCR 10-24 X 3/8	106	PPAINT-1	GRIZZLY GREEN PAINT

G1029Z2 Main Parts List

REF	PART #	DESCRIPTION	REF	PART #	DESCRIPTION
1	P1028Z2001	CASTER	20	P1028Z2020	HOSE CLAMP 5"
2	PFB01	FLANGE BOLT 5/16-18 X 1/2	21	P1028Z2021	HOSE 5"
3	PK28M	KEY 7 X 7 X 29	22	T20543	LOWER PLASTIC BAG
4	P1028Z2004	BASE PLATE	23	P1028Z2023	COLLECTOR SUPPORT
5	PS06	PHLP HD SCR 10-24 X 3/8	24	P1028Z2024	COLLECTOR
6	P1028Z2006	INLET COVER 6"	25	P1028Z2025	SPACER
7V2	P1028Z2007V2	CAP SCREW M6-1 X 30 LH PRE-COATED	26	P1028Z2026	UPPER BAG SUPPORT
9	P1028Z2009	IMPELLER WASHER	27	G5556	2.5 MICRON FILTER BAG
10V2	P1029Z2010V2	IMPELLER 12-3/4" X 7/8" ALUMINUM V2.09.11	28	P1028Z2028	GASKET
11	P1028Z2011	COLLECTOR BODY	29	P1028Z2029	6" X 4" X 4" Y-INLET
12	PW07	FLAT WASHER 5/16	29-1	P1028Z2029-1	INLET CAP 4"
13V2	P1029Z2013V2	POWER CORD 14G 3C 6' 6-15 V2.09.11	30	P1028Z2030	FOAM STRIP 5 X 20MM
14	PN02	HEX NUT 5/16-18	31	P1028Z2031	BELT CLAMP
15	PB03	HEX BOLT 5/16-18 X 1	32	PWR1012	WRENCH 10 X 12MM OPEN-END
16V2	P1030Z2015V2	PADDLE SWITCH V2.09.11	33	PAW05M	WRENCH HEX 5MM
17V2	P1029Z2017V2	MOTOR 2HP 220V 1PH V2.09.11	35	PLW03M	LOCK WASHER 6MM
17V2-1	P1028Z2017V2-1	MOTOR FAN COVER	101	PLABEL-14	ELECTRICITY LABEL
17V2-2	P1028Z2017V2-2	MOTOR FAN	102	PLABEL-59	HANDS/OUTLET LABEL
17V2-3	P1028Z2017V2-3	CAPACITOR COVER	103	PLABEL-12A	READ MANUAL LABEL
17V2-4	PC300G	S CAPACITOR 300M 125V 1-3/4 X 3-3/8	104V2	P1029Z2104V2	MACHINE ID LABEL CSA V2.09.11
17V2-5	P1029Z2017V2-5	JUNCTION BOX	105	PLABEL-57	EYE/LUNG LABEL
18	PFS03	FLANGE SCREW 10-24 X 3/8	106	PPAINT-1	GRIZZLY GREEN PAINT
19	P1028Z2019	OUTLET			



G1029Z2P Main Breakdown



G1029Z2P Main Parts List

REF	PART #	DESCRIPTION
1	P1029Z2P001	CASTER
2	P1029Z2P002	FLANGE BOLT 5/16-18 X 1/2
3	P1029Z2P003	KEY 7 X 7 X 29
4	P1029Z2P004	BASE PLATE
5	P1029Z2P005	PHLP HD SCR 10-24 X 3/8
6	P1029Z2P006	INLET COVER 6"
7V2	P1029Z2P007V2	CAP SCREW M6-1 X 30 LH PRE-COATED
9	P1029Z2P009	IMPELLER WASHER
10	P1029Z2P010	IMPELLER 12-3/4" ALUMINUM V2.09.11
11	P1029Z2P011	COLLECTOR BODY
12	P1029Z2P012	FLAT WASHER 5/16
13	P1029Z2P013	POWER CORD 14G 3C 6' 6-15 V2.09.11
14	P1029Z2P014	HEX NUT 5/16-18
15	P1029Z2P015	HEX BOLT 5/16-18 X 1
16	P1029Z2P016	PADDLE SWITCH V2.09.11
17V2	P1029Z2P017V2	MOTOR 2HP 220V 1PH V2.08.18
17V2-1	P1029Z2P017V2-1	MOTOR FAN COVER
17V2-2	P1029Z2P017V2-2	MOTOR FAN
17V2-3	P1029Z2P017V2-3	CAPACITOR COVER
17V2-4	P1029Z2P017V2-4	S CAPACITOR 300M 125V 1-3/4 X 3-3/8
17V2-5	P1029Z2P017V2-5	MOTOR WIRING JUNCTION BOX
17V2-6	P1029Z2P017V2-6	R CAPACITOR 30M 250V 1-3/8 X 2-3/8
18	P1029Z2P018	FLANGE SCREW 10-24 X 3/8
19	P1029Z2P019	OUTLET

REF	PART #	DESCRIPTION
20	P1029Z2P020	HOSE CLAMP 5"
21	P1029Z2P021	HOSE 5"
22	P1029Z2P022	LOWER PLASTIC BAG
23	P1029Z2P023	COLLECTOR SUPPORT
24	P1029Z2P024	COLLECTOR
25	P1029Z2P025	SPACER
26	P1029Z2P026	UPPER BAG SUPPORT
27	P1029Z2P027	2.5 MICRON FILTER BAG
28	P1029Z2P028	GASKET
29	P1029Z2P029	6" X 4" X 4" Y-INLET
29-1	P1029Z2P029-1	INLET CAP 4"
30	P1029Z2P030	FOAM STRIP 5 X 20MM
31	P1029Z2P031	BELT CLAMP
32	P1029Z2P032	WRENCH 10 X 12MM OPEN-END
33	P1029Z2P033	WRENCH HEX 5MM
35	P1029Z2P035	LOCK WASHER 6MM
101	P1029Z2P101	ELECTRICITY LABEL
102	P1029Z2P102	HANDS/OUTLET LABEL
103	P1029Z2P103	READ MANUAL LABEL
104	P1029Z2P104	MACHINE ID LABEL
105	P1029Z2P105	EYE/LUNG LABEL
106	P1029Z2P106	POLAR BEAR PAINT
107	P1029Z2P107	POLAR BEAR LOGO 1 X 3-3/4

WARNING

Safety labels help reduce the risk of serious injury caused by machine hazards. If any label comes off or becomes unreadable, the owner of this machine **MUST** replace it in the original location before resuming operations. For replacements, contact (800) 523-4777 or www.grizzly.com.

