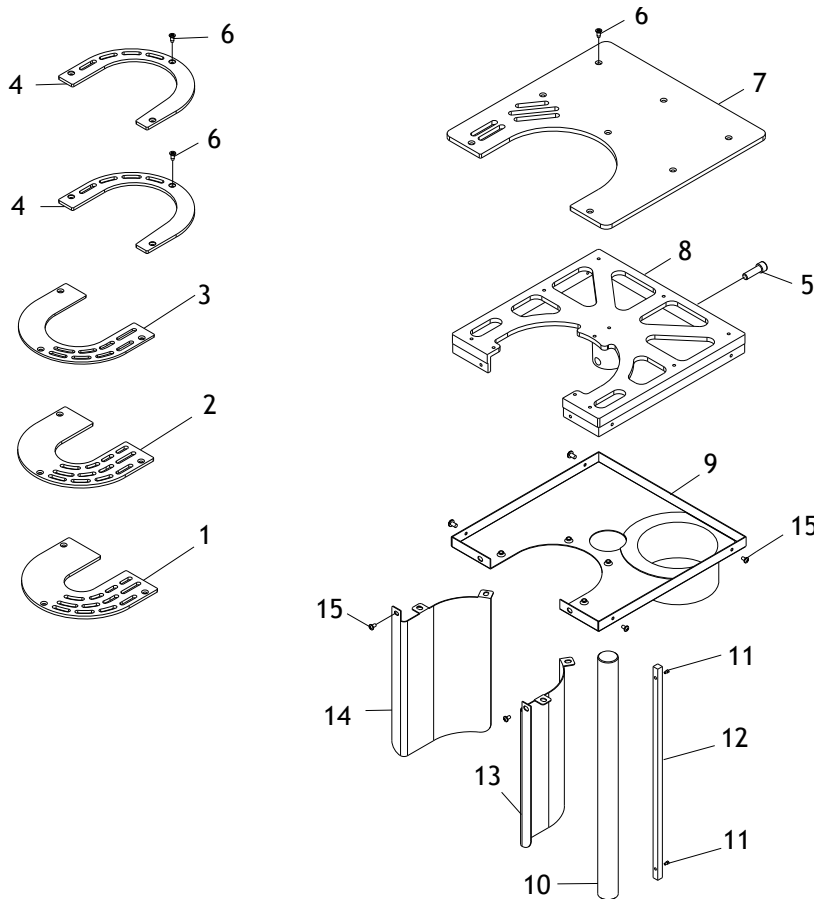


3. Slide the Model D3741 auxiliary table shaft into the opening in the idler roller bracket (see Figure 2).
4. Adjust the auxiliary table height to the sanding belt or spindle—depending upon which size insert is installed, then tighten the lock handle.
5. Fit a 4" dust hose over the dust port and secure it in place with a hose clamp.

**⚠ WARNING**

A gap is created between the 4<sup>1</sup>/<sub>4</sub>" insert and the spindle sanding drum. To reduce the risk of fingers getting pinched in this gap, **DO NOT** sand workpieces on the spindle drum with the 4<sup>1</sup>/<sub>4</sub>" insert! **ONLY** sand workpieces on the main belt with the 4<sup>1</sup>/<sub>4</sub>" insert.

## D3741 Parts



REF	PART #	DESCRIPTION
1	XD3741001	TABLE INSERT 1-3/4"
2	XD3741002	TABLE INSERT 2-1/4"
3	XD3741003	TABLE INSERT 3-1/4"
4	XD3741004	TABLE INSERT 4-1/4"
5	XPSB16	CAP SCREW 3/8-16 X 3/4
6	XPFH01	FLAT HD SCR 10-24 X 3/8
7	XD3741007	TABLE TOP
8	XD3741008	CAST IRON TABLE U-TYPE

REF	PART #	DESCRIPTION
9	XD3741009	DUST COLLECTOR COVER
10	XD3741010	TABLE SPINDLE U-TYPE
11	XPSB17M	CAP SCREW M4-.7 x 10
12	XD3741012	KEY 5/16 X 5/16 X 12-3/8
13	XD3741013	TABLE COVER U-TYPE (L)
14	XD3741014	TABLE COVER U-TYPE (R)
15	XPFS03	FLANGE SCREW 10-24 X 3/8