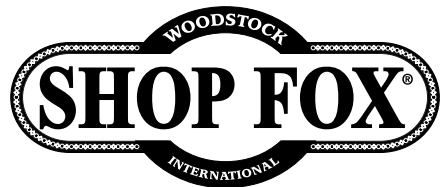


Model D3741 Auxiliary Table for Model W1730 Instruction Sheet



Phone #: (360) 734-3482 • Online Tech Support: tech-support@shopfox.biz • Web: www.shopfox.biz

Introduction

The Model D3741 auxiliary table replaces the spindle sanding table included with the Model W1730 oscillating edge sander, and improves dust collection when workpieces are sanded on the spindle drum or end of the sanding belt.

Inventory (Figure 1)

| | Qty |
|--|-----|
| A. Auxiliary Table | 1 |
| B. Table Insert 4 ¹ / ₄ " (Preinstalled) | 1 |
| C. Table Insert 3 ¹ / ₄ " | 1 |
| D. Table Insert 2 ¹ / ₄ " | 1 |
| E. Table Insert 1 ³ / ₄ " | 1 |

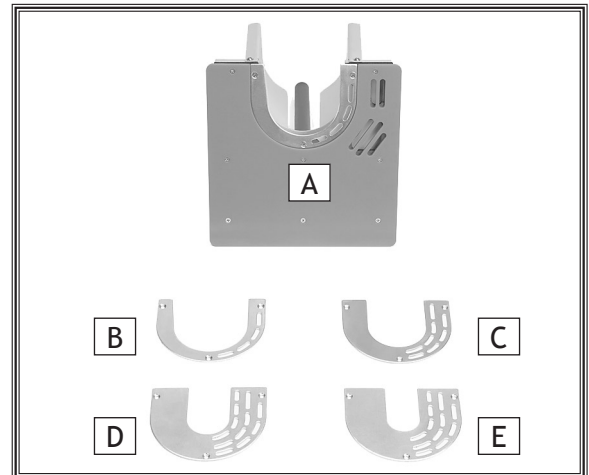


Figure 1. Model D3741 inventory.

Assembly

- Loosen the lock handle on the idler roller bracket and slide the existing spindle sanding table out.
- Determine whether you will sand the workpiece on the end of the main sanding belt or on one of the spindle drums.
 - If you plan to sand the workpiece on the end of the belt, leave the preinstalled 4¹/₄" table insert installed in the auxiliary table, and proceed to **Step 3**.
 - If you plan to sand the workpiece on one of the spindle drums, remove the Phillips head screws (see **Figure 2**) and the 4¹/₄" insert. Measure the diameter of the spindle drum installed on the sander. Insert the correct sized insert into the auxiliary table, secure with the Phillips head screws, then proceed to **Step 3**.

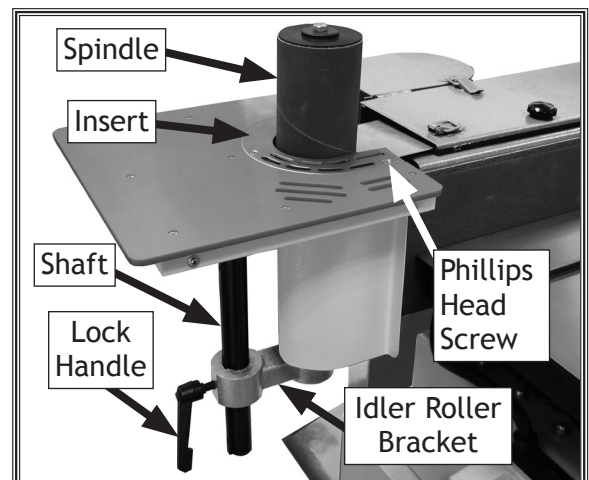


Figure 2. Model D3741 installed.

Note: The 1³/₄", 2¹/₄", and 3¹/₄" table inserts only fit the spindle drum—they will not fit over the main sanding belt and idler roller.

COPYRIGHT © AUGUST, 2008 BY WOODSTOCK INTERNATIONAL, INC.

WARNING: NO PORTION OF THIS MANUAL MAY BE REPRODUCED IN ANY SHAPE OR FORM WITHOUT THE WRITTEN APPROVAL OF WOODSTOCK INTERNATIONAL, INC.

#11053BL

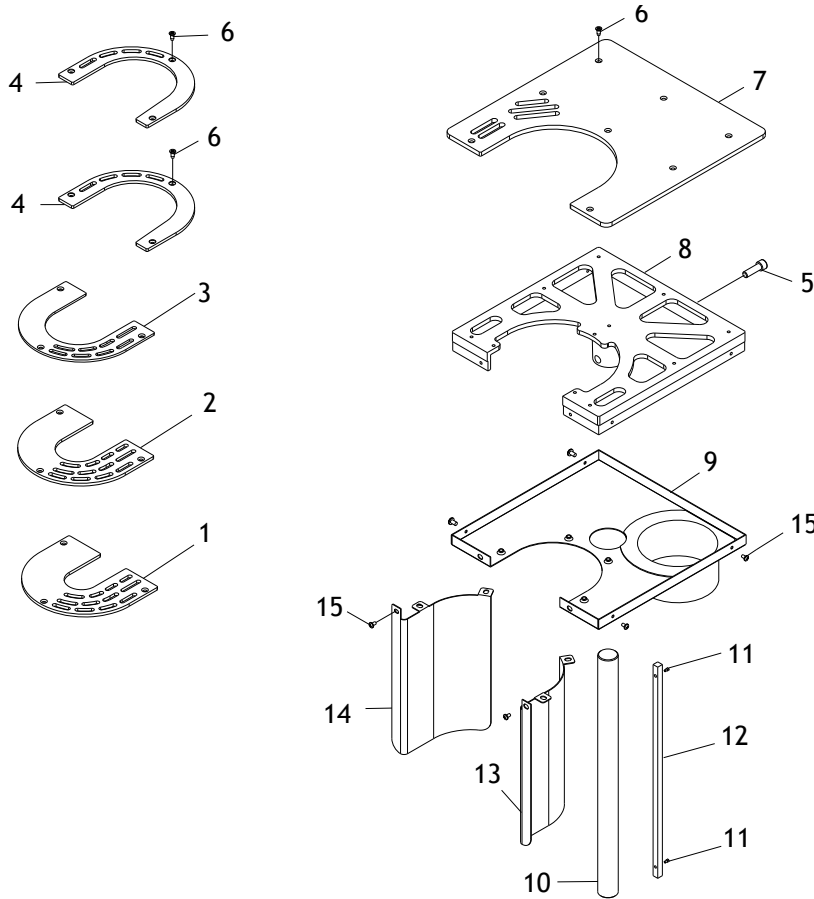
Printed in Taiwan

3. Slide the Model D3741 auxiliary table shaft into the opening in the idler roller bracket (see Figure 2).
4. Adjust the auxiliary table height to the sanding belt or spindle—depending upon which size insert is installed, then tighten the lock handle.
5. Fit a 4" dust hose over the dust port and secure it in place with a hose clamp.

⚠ WARNING

A gap is created between the 4¹/₄" insert and the spindle sanding drum. To reduce the risk of fingers getting pinched in this gap, **DO NOT** sand workpieces on the spindle drum with the 4¹/₄" insert! **ONLY** sand workpieces on the main belt with the 4¹/₄" insert.

D3741 Parts



| REF | PART # | DESCRIPTION |
|-----|-----------|-------------------------|
| 1 | XD3741001 | TABLE INSERT 1-3/4" |
| 2 | XD3741002 | TABLE INSERT 2-1/4" |
| 3 | XD3741003 | TABLE INSERT 3-1/4" |
| 4 | XD3741004 | TABLE INSERT 4-1/4" |
| 5 | XPSB16 | CAP SCREW 3/8-16 X 3/4 |
| 6 | XPFH01 | FLAT HD SCR 10-24 X 3/8 |
| 7 | XD3741007 | TABLE TOP |
| 8 | XD3741008 | CAST IRON TABLE U-TYPE |

| REF | PART # | DESCRIPTION |
|-----|-----------|--------------------------|
| 9 | XD3741009 | DUST COLLECTOR COVER |
| 10 | XD3741010 | TABLE SPINDLE U-TYPE |
| 11 | XPSB17M | CAP SCREW M4-.7 x 10 |
| 12 | XD3741012 | KEY 5/16 X 5/16 X 12-3/8 |
| 13 | XD3741013 | TABLE COVER U-TYPE (L) |
| 14 | XD3741014 | TABLE COVER U-TYPE (R) |
| 15 | XPFS03 | FLANGE SCREW 10-24 X 3/8 |