

# Model D3640 Deluxe Tool Table Instruction Sheet



Phone #: (360) 734-3482 • Tech Support: techsupport@woodstockint.com • Web: www.woodstockint.com

## Introduction

The Model D3640 Shop Fox Deluxe Tool Table (see Figure 1) is designed to give you a solid, stable work surface. This table has a 700 lb. capacity. The flared steel legs, bracing top and bottom, and under-table braces provide a solid foundation for the 14" x 40" x 1<sup>1</sup>/<sub>4</sub>" work surface. The table top is 33" high, providing a comfortable working height for a variety of benchtop machinery.

## Inventory (Figure 2)

REF	PART #	DESCRIPTION	QTY
1	XD3640001	TABLE TOP	1
2	XD3640002	SHORT TOP BRACE	2
3	XD3640003	LONG TOP BRACE	2
4	XD3640004	LONG LOWER BRACE	2
5	XD3640005	SHORT LOWER BRACE	2
6	XD3640006	LEG	4
7	XD3640007	TABLE BRACE	2
8	XD3640008	CORNER BRACE	4



Figure 1. Model D3640.

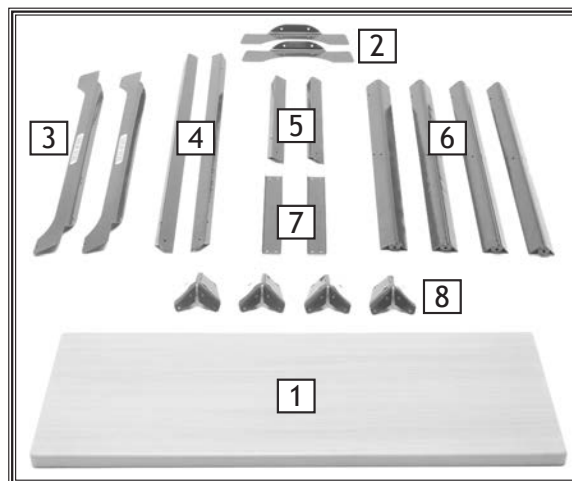


Figure 2. Machine inventory.

## Hardware Bag (Not Shown)

REF	PART #	DESCRIPTION	QTY
9	XD3640009	TAP SCREW M5 X 20	32
10	XD3640010	PHLP HD SCR M5- .8 X 12	32
11	XD3640011	EXT TOOTH WASHER 5MM	32
12	XD3640012	HEX NUT M5- .8	32
13	XD3640013	ADJUSTABLE FOOT M8- 1.25 X 28	4

If structural parts are missing please contact Woodstock International for replacements. For the sake of expediency, replacements for non-proprietary parts can be obtained at your local hardware store.

**COPYRIGHT © OCTOBER, 2006 BY WOODSTOCK INTERNATIONAL, INC. REVISED JUNE, 2019 (MN)**

**WARNING: NO PORTION OF THIS MANUAL MAY BE REPRODUCED IN ANY SHAPE OR FORM WITHOUT**

#8594JC

**THE WRITTEN APPROVAL OF WOODSTOCK INTERNATIONAL, INC.**

Printed in China

## Assembly

We recommend that you have an assistant help position the pieces while you assemble the stand.

### **NOTICE**

Do not fully tighten stand screws, washers, and hex nuts until all components have been assembled.

To assemble the stand, do these steps:

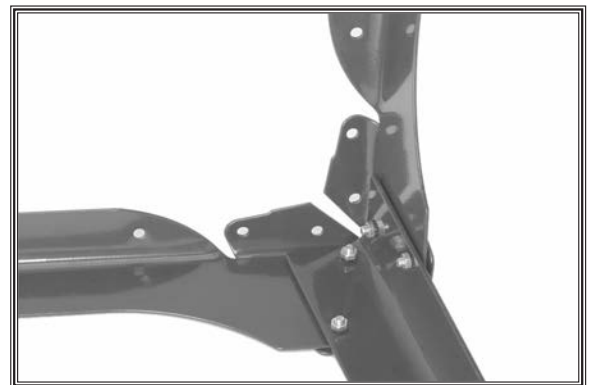
1. Loosely fasten one corner bracket, one long top brace and one leg using the phillips screws, tooth washers and hex nuts provided. See **Figure 3** for positioning.
2. Fasten another corner bracket and another leg to the free end of the long top brace used in **Step 1**. Again, refer to **Figure 3** for proper positioning.
3. Fasten a long lower brace to the leg assembly completed in **Steps 1-2** (see **Figure 4**).
4. Repeat **Steps 1-3** to build another leg assembly.
5. With the help of an assistant, fasten the short top braces and short bottom braces to one of the leg assemblies as shown in **Figure 5**. The top braces, legs and corner braces **MUST** be "sandwiched" exactly as shown in **Figure 5**. If they are not, the table top cannot be properly mounted to the stand.
6. With the help of an assistant, fasten the second leg assembly to the first. This is best done with the stand positioned upside down on a workbench (see **Figure 6**).



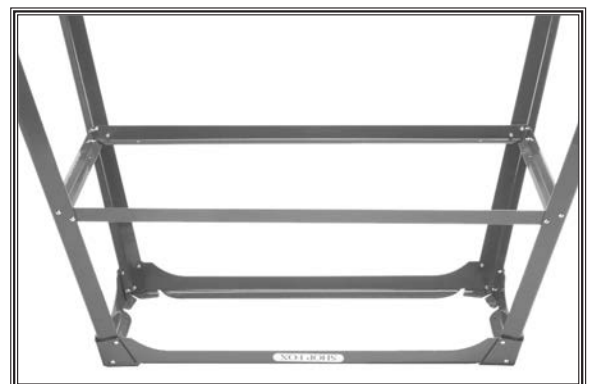
**Figure 3.** Correct positioning of long top brace, corner bracket and leg.



**Figure 4.** Completed leg assembly.



**Figure 5.** Correct placement at corners.



**Figure 6.** Completed stand assembly.

To attach the table to the stand, do these steps:

1. Place the table top upside down on a clean surface to avoid scratching.
2. Put the stand assembly on the table top. Adjust spacing until even (see **Figure 7**).
3. Using a pencil, mark the underside of the table top where the holes are positioned in the corner brackets and top braces. (For now, do not mark the two pairs of center holes in the long braces.)
4. Remove the stand, then drill  $\frac{1}{8}$ " diameter holes  $\frac{3}{4}$ " deep at your marks.



**Figure 7.** Mounting stand to table top.

## NOTICE

Do not drill farther than  $\frac{3}{4}$ " into the underside of the table top or you may puncture the table surface.

5. Put the stand back on the table top and position the holes in the stand over your guide holes. Use the tap screws provided to mount the stand through the guide holes.
6. Tighten the frame hex nuts and screw the adjustable feet into the leg ends. Adjust the feet as needed to level the table.

**Note:** *If you plan to load your stand to full capacity, attach the two table braces by completing Steps 7-10; otherwise, assembly is complete.*

7. Turn the table upside down and place it on a smooth surface to prevent scratching.
8. Position a table brace as shown in **Figure 8** and, with the help of an assistant, align its holes with those in the middle of the long top braces.
9. Mark the position of these holes on the underside of the table top, drill guide holes at these marks ( $\frac{1}{8}$ " diameter x  $\frac{3}{4}$ " deep), and secure the table brace with tap screws.
10. Attach the second brace by repeating **Steps 8-9**.



**Figure 8.** Table brace position.

## Customer Service

For questions contact Woodstock  
International Technical Support at (360)  
734-3482, or send e-mail to:  
[tech-support@woodstockint.com](mailto:tech-support@woodstockint.com).